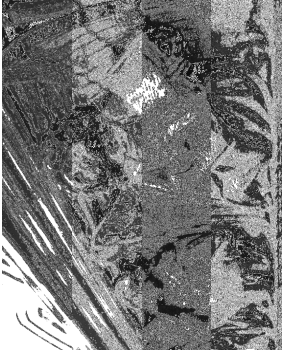


R S M

# Manchester Area Festival 2008



## SUNDAY 20<sup>TH</sup> APRIL 2008

3pm rehearsal for 6pm Service

*St Ann's Church, Manchester City Centre*

**Directed by:** Tim Noon, *Director of Music, Liverpool Metropolitan Cathedral*  
**Organist:** Ronald Frost, *Director of Music, St Ann's Church, Manchester*

The fourth annual festival is an opportunity for the choirs and singers of Manchester and beyond to come together to sing some wonderful choral music. It also features the presentation of awards to successful candidates for the RSCM Bronze and Silver awards from the past year.

As in previous years the only cost for participation is a little time in rehearsal and the price of the Festival Book, this year at the reduced price of £3.50 per copy! The book isn't just a memento for the day, but is intended to be a useful resource for churches and choirs.

We have arranged several preliminary rehearsals for participants to get a flavour of the music and although these are optional we would advise participants to try to attend at least one. However the rehearsal on the day, from 3pm, is compulsory.

Complete the booking form opposite, and **before Sunday 30<sup>th</sup> March**, to order your copies today and register your interest for the Manchester Area Festival.

### Booking Form

Name:

Address:

Post Code:

Telephone No.

E-mail:

Church/Choir:   
*(if applicable)*

No. of booklets required:  P+P (see over):  Total Payable:

@ £3.50 ea.

Number of singers attending:

Please indicate which of the following preliminary rehearsals you or your choir will be attending:

7-9pm Mon. 18 <sup>th</sup> Feb. @ St Ann's, Manchester	<input type="text"/>
7-9pm Tues. 26 <sup>th</sup> Feb. @ St Aidan's, Rochdale	<input type="text"/>
10am-12pm Sat. 8 <sup>th</sup> March @ Bury Parish Church	<input type="text"/>
7-9pm Wed. 9 <sup>th</sup> April @ St Ann's, Manchester	<input type="text"/>
10am-12pm Sat. 12 <sup>th</sup> April @ St George's, Stockport	<input type="text"/>

**Please return this form by Sunday 30<sup>th</sup> March at the latest**

**Return Form, with payment for booklets & P+P, to:**

Mr P Asher, 184 Lloyd Street South, Manchester, M14 7DY

T: 0161 2262756 E: [secretary@rscmmanchester.co.uk](mailto:secretary@rscmmanchester.co.uk)

W: [www.rscmmanchester.co.uk](http://www.rscmmanchester.co.uk)

**Please make cheques payable to 'RSCM Manchester Area'**

## MAF Booklet P+P Scale 2008

The following table gives the scale of Postage + Packaging costs for the Festival Booklet 2008.

If you would like to collect your copies instead of us sending them out to you then please indicate this in the P+P box by writing in 'COLLECT'.

You can collect copies at preliminary rehearsals or from St Ann's Church, Manchester by arrangement. Please contact the Secretary on:

0161 2262756, or E-mail: [secretary@rscmmanchester.co.uk](mailto:secretary@rscmmanchester.co.uk)

Payment can also be made upon collection in cash or by cheque. **DO NOT SEND CASH IN THE POST.**

<u>No. of Copies</u>	<u>P+P Cost</u>
1	65p
2	£1.20
3	£1.70
4	£2.40
5	£3.00
6	£3.50
7-10	£5.00
11-13	£6.00
14-15	£7.00
16-20	£8.00
21-25	£9.50
26+	Please enquire